

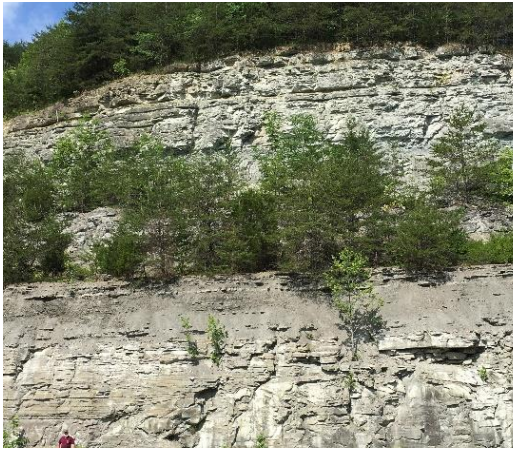


# Geological Society of Kentucky 2019 Fall Field Trip November 15 and 16



## Carboniferous geology along Kentucky Highways 9 and 10 (AA Highway) in Greenup, Lewis, and Carter Counties, Kentucky

Trip leaders: Charlie Mason, Stephen Greb, Tim Lewis, Frank Fugitt, William Gilliam, Matt Boudreaux, Justin Spears, Ron Martino, and Cortland Eble



### Friday, November 15;

**Noon to 3:00 p.m.** Carboniferous cores from northeastern Kentucky. View a selection of cores at the Kentucky Geological Survey Earth and Resources Library, 2500 Research Drive, Lexington, KY. 40511. Cores will be left out for viewing till Wednesday, November 20, by RSVP only 859.389.8810.

**6:00 p.m.** Dinner on your own at the Carter Caves State Resort Park (Olive Hill Room). We will have a guest speaker after dinner. Rooms at Carter Caves Resort State Park are \$85.95, call 606-286-4411 using ID code 2943 Geological Society of Kentucky meeting for reservations. You must make your own room reservations if you want to stay the night before the trip.

### Saturday, November 16;

**8:00 a.m. to 5:00 pm** Meet at Carter Caves State Resort Park lodge for registration and start of the field trip at 8 am. Field trip will last until approximately 5 pm. Lunch and field guide are included. We will travel by bus to outcrops on Ky. Highways 9 and 10 to examine the Mississippian Borden and Slade Formations, the Mississippian-Pennsylvanian unconformity at three different locations, and the Lower Pennsylvanian Grundy Formation, including the Olive Hill flint clay, and a stop at a local limestone quarry in the Slade Formation.

*For updates please check: <http://www.uky.edu/OtherOrgs/GSK>*

**\$45-GSK Member**

**\$50-Non Member**

**\$10-Students**

*(Costs include guidebook, lunch, drinks, and snacks)*

Make checks payable to and send to:  
Geological Society of Kentucky or GSK  
PO Box 704, Lexington, KY 40588  
Attn: Faith Fiene

By credit card using paypal, go to:  
<http://www.uky.edu/OtherOrgs/GSK/payment.htm>